



6ft Turbo Twister Slide  
Assembly Manual

# 6ft Tornado Tube Slide Assembly Manual

## Tools Needed for Assembly

- Socket Set with 1/2" Sockets
- 1/2" Wrench
- Socket Adapter
- Impact Driver

## Parts

---



(1) Entry Tube with Cover Plate



(1) Tube Slide Exit



(6) 45 Degree Elbows



Elbows have (6) Top Halves and  
(6) Bottom Halves.

## Hardware

---



5/16" x 1" Bolts



3/8" Washers



5/16" Lock Nuts

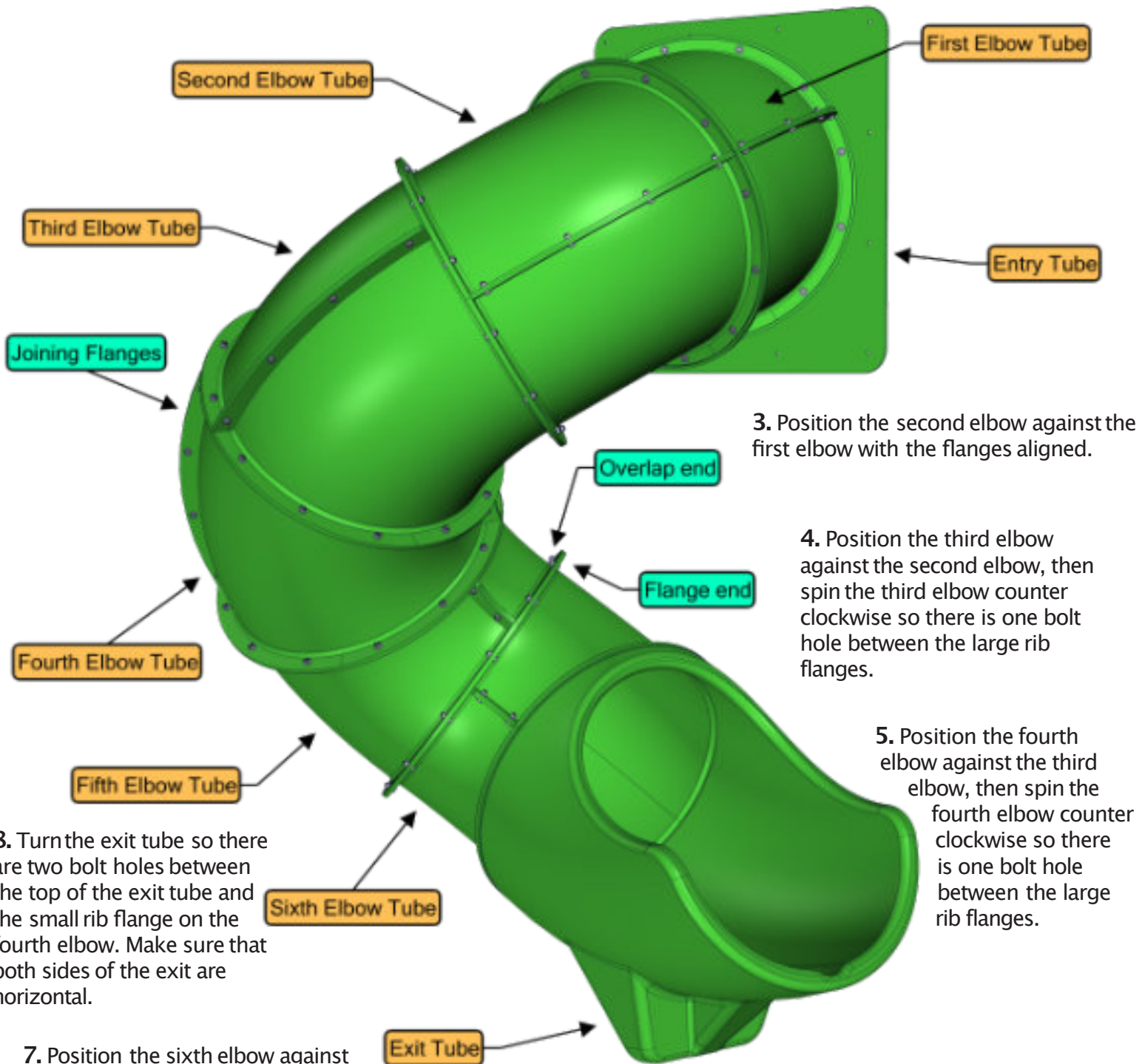


5/16" x 1 1/2" Lags

# Quick Reference Guide

1. Assemble six elbows then position the entry tube so it turns to the right side looking at the entry tube from the front.

2. Position the first elbow against the entry tube and align the small rib flange with the left center of entry tube. Then turn the first elbow counter clockwise one bolt hole.



# Assembly Process



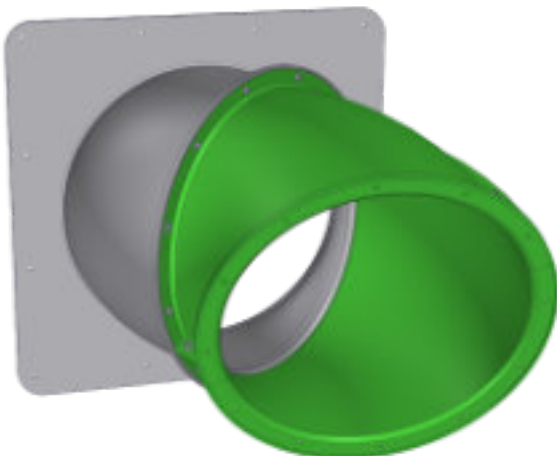
## Step 1.

Turn the Entry Tube so that it angles to the right side of opening. Center the Entry Tube in the opening and make sure bottom of the Entry Tube hole is flush with the deck. Secure Entry Tube with (12) lags with washers around outside perimeter of cover plate.



## Step 2.

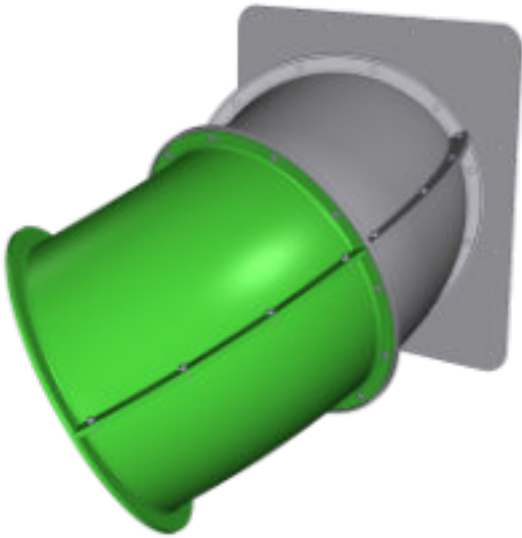
Assemble six elbows. Insert (6) bolts with washers through holes on overlap side of joining flanges. Secure bolts with (6) washers and locknuts then tighten with tools. Make sure overlaps and flanges are at same ends on both halves before assembly.



## Step 3.

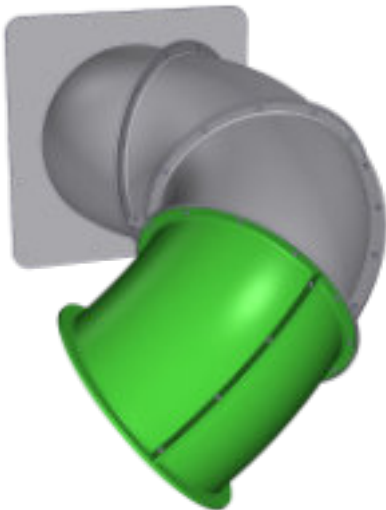
Position the flat flange end of the 45 degree Elbow against the overlap end of the Entry Tube. Turn the first Elbow so that the joining flanges are horizontal. Turn the first elbow counterclockwise one bolt hole and then secure with (12) bolts, (24) washers, and (12) locknuts.

# Assembly Process



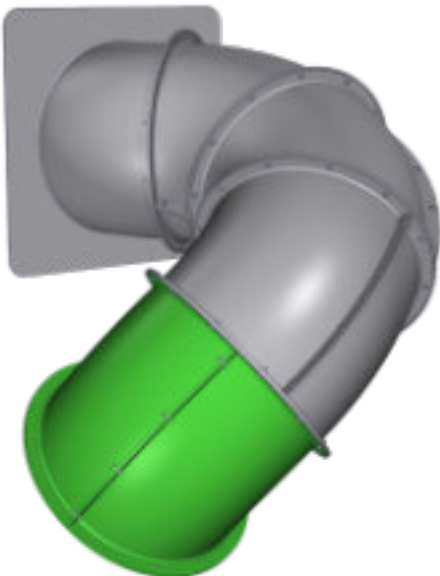
## Step 4.

Position the second Elbow flange end against the first Elbow overlap end so the large joining flanges line up. Secure the elbow with (12) bolts, (24) washers, and (12) locknuts.



## Step 5.

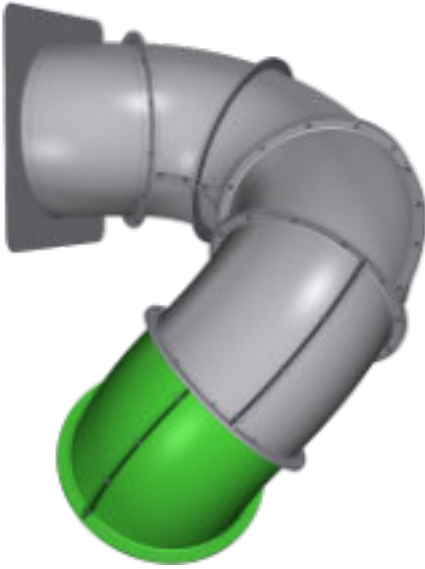
Position the third Elbow with flange end against the second Elbow overlap end so the large joining flanges line up. Turn the third Elbow counterclockwise one bolt hole and then secure with (12) bolts, (24) washers, and (12) locknuts.



## Step 6.

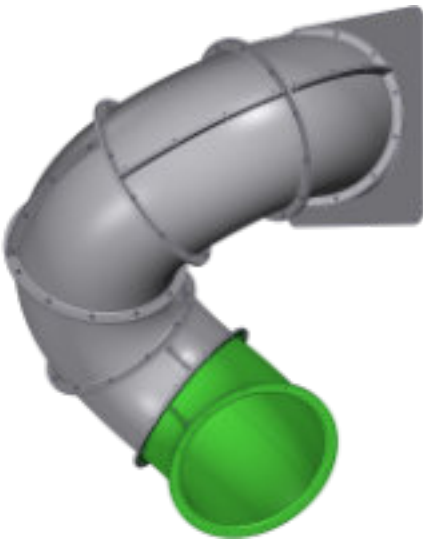
Position the fourth Elbow with flange end against the third Elbow overlap end so the large joining flanges line up. Turn fourth elbow counterclockwise one bolt hole and then secure with (12) bolts, (24) washers, and (12) locknuts.

# Assembly Process



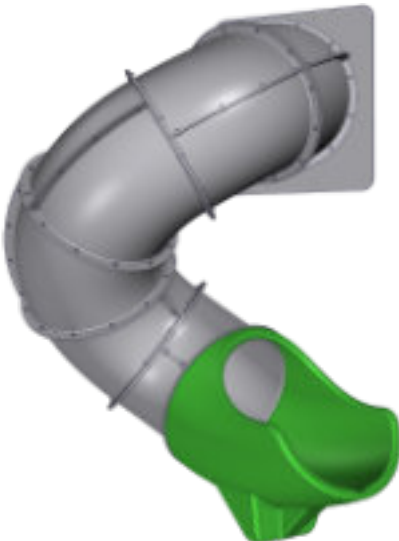
## Step 7.

Position the fifth Elbow with flange end against the fourth Elbow overlap end so the large joining flanges line up. Turn fifth elbow counterclockwise one bolt hole and then secure with (12) bolts, (24) washers, and (12) locknuts.



## Step 8.

Position the sixth Elbow with flange end against the fifth Elbow overlap end so the large joining flanges line up. Turn sixth elbow counterclockwise one bolt hole and then secure with (12) bolts, (24) washers, and (12) locknuts.

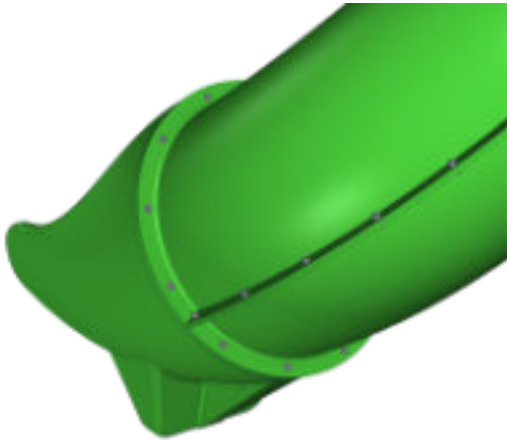


## Step 9.

Install the Tube Slide Exit section against the trimmed overlap end of the sixth Elbow. Loosen the bottom bolts of the Elbow on either side of joining flanges for better hole alignment.

Install the Tube Slide exit against sixth Elbow Flange so that the sides of the TubeSlide Exit are level and there are two holes between the small rib joining flange of the elbow and the top center of the exit.

# Assembly Process



## Step 10.

Secure the overlap end of the last Elbow Tube to the Tube Slide Exit with (2) 5/16" bolts with washers.

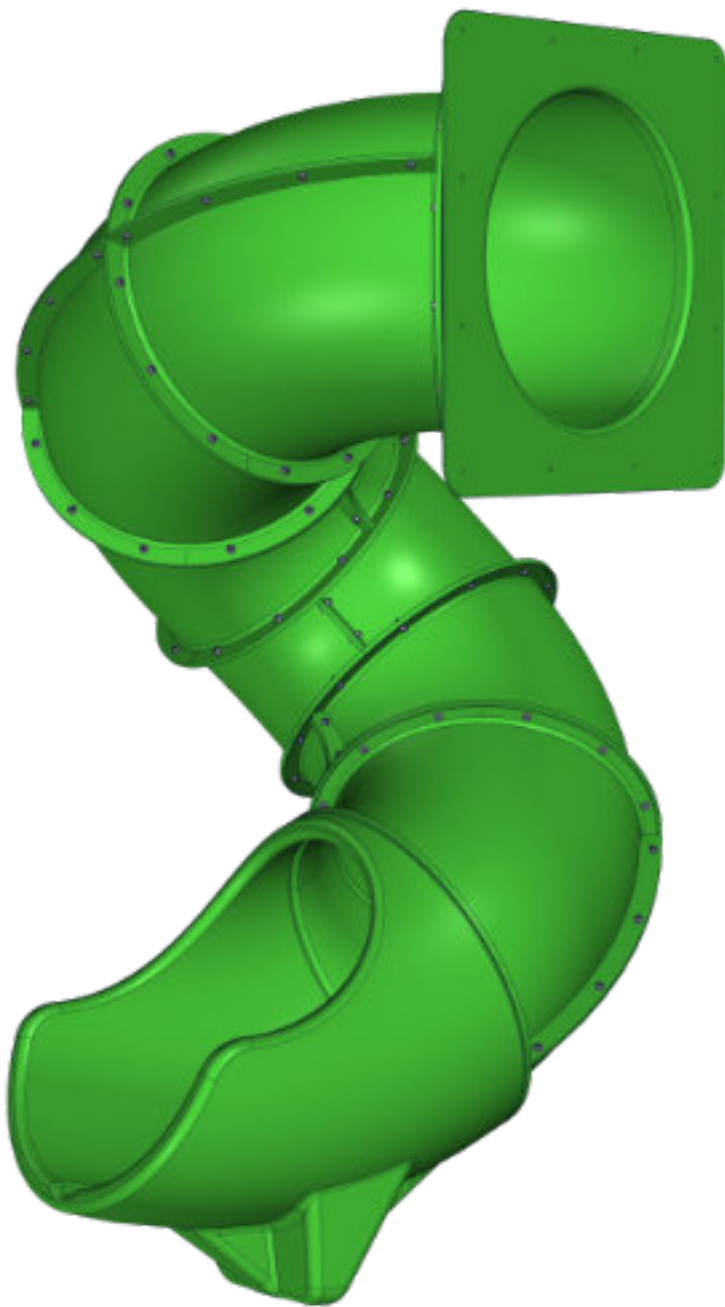
Fasten two bolts into the pressed nuts near the bottom of the Exit making sure the exit is level on both sides.

Install 5/16"x1 1/2" lags with washers through the remaining ten holes in the Elbow Flange into the plastic of the Exit Section, taking care not to overtighten the lags in the plastic.

Check to make sure all bolts and lags are secured tightly on the tube slide. Do not overtighten locknuts and lags.



# Safety Information



## Safety Precautions

- Make sure to properly follow instruction manual for your specific slide.
- Make sure the play structure that you are attaching the slide to is sturdy and able to support this type of equipment.
- Check and make sure all hardware is secured properly. This will need to be done as routine maintenance program on all playground equipment.
- This product is made to be used as a playground slide exclusively.
- If for any reason installation can not be completed thoroughly; do not leave slide or opening on play equipment in a unsafe manner to which injuries may occur.
- Please check with CPSC's recommendation for safety on their web site and follow their most recent handbook.

[www.cpsc.gov/s3fzs-public/324.pdf](http://www.cpsc.gov/s3fzs-public/324.pdf)

**Proper installation and safety is the responsibility of the installer.**