



Tunnel Express Slide  
Assembly Manual

# Tunnel Express Slide Assembly Manual

## Tools Needed for Assembly

- Socket Set with 1/2" Sockets
- 1/2" Wrench
- Socket Adapter
- Impact Driver

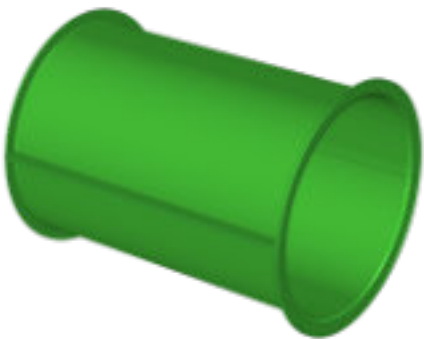
## Parts



(1) Entry Tube with Cover Plate



(1) Tube Slide Exit



Assembled Straight Tubes



Straight Tubes have a top and bottom half.

## Hardware



5/16'x1' Bolts



3/8' Washers



5/16' Lock Nuts



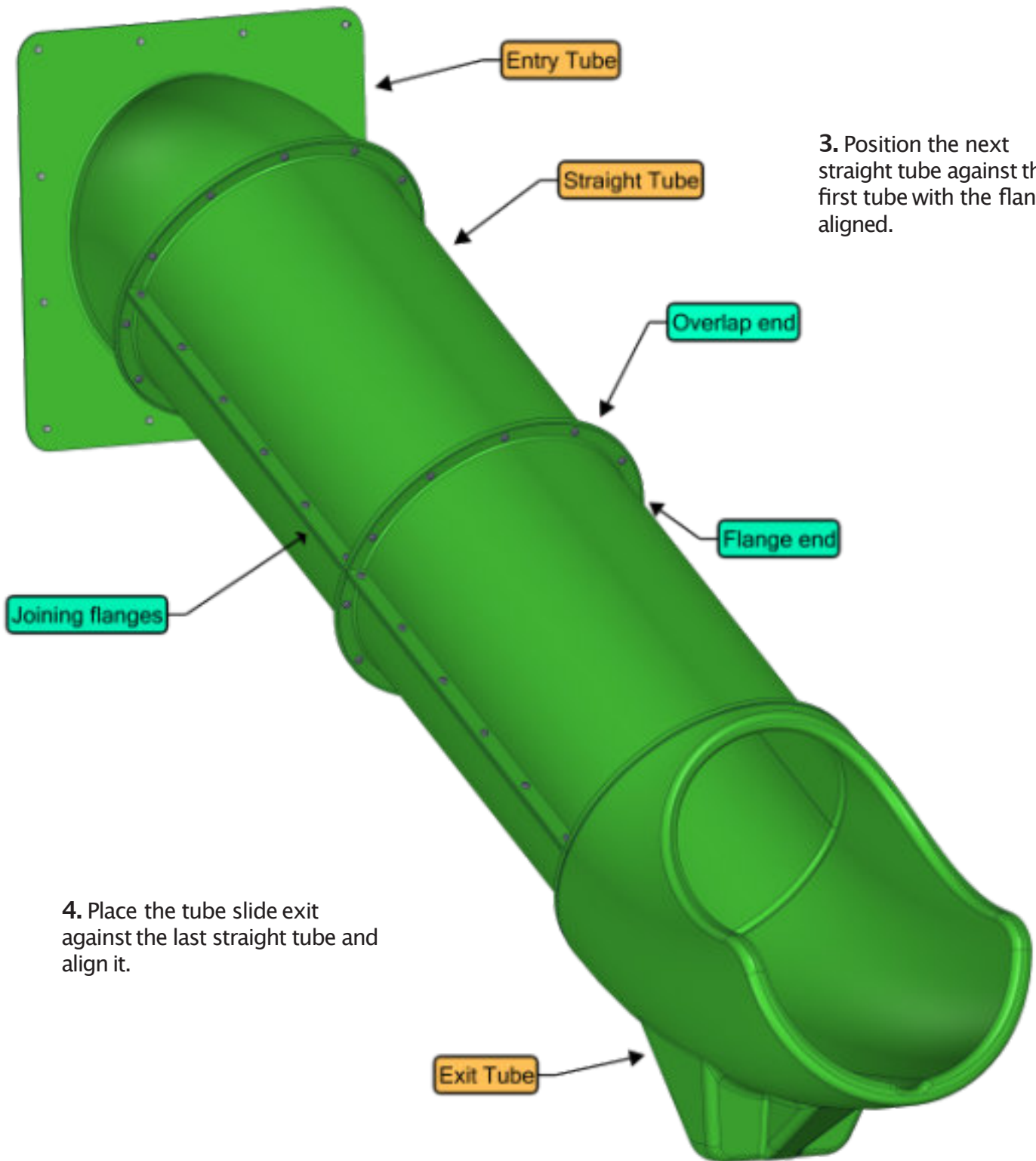
5/16'x1 1/2' Lags

# Quick Reference Guide

1. Assemble the straight tubes then position the entry tube so it turns down as shown in the illustration.

2. Position the first straight tube against the entry tube and rotate it so the joining flanges are horizontal.

3. Position the next straight tube against the first tube with the flanges aligned.



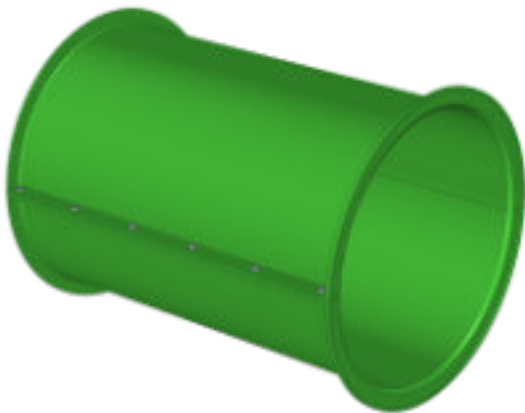
4. Place the tube slide exit against the last straight tube and align it.

# Assembly Process



## Step 1.

Turn the Entry Tube so that it angles down. Center the Entry Tube in the opening and make sure bottom of the Entry Tube hole is flush with the deck. Secure Entry Tube with (12) lags with washers around outside perimeter of cover plate.



## Step 2.

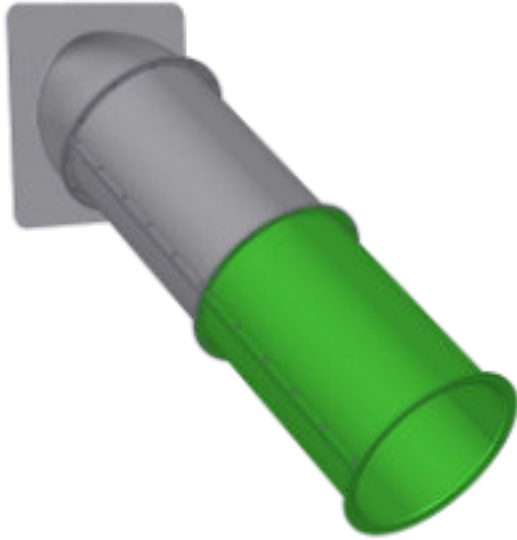
Assemble the straight tubes. Insert (6) bolts with washers through holes on overlap side of joining flanges. Secure bolts with (6) washers and locknuts then tighten with tools. Make sure overlaps and flanges are at same ends on both halves before assembly.



## Step 3.

Position the flat flange end of the straight tube against the overlap end of the Entry Tube. Turn the first straight tube so that the joining flanges are horizontal. Secure the straight section to the Entry Tube with (12) bolts, (24) washers, and (12) lock-nuts. Start the locknuts on bolt threads and then tighten.

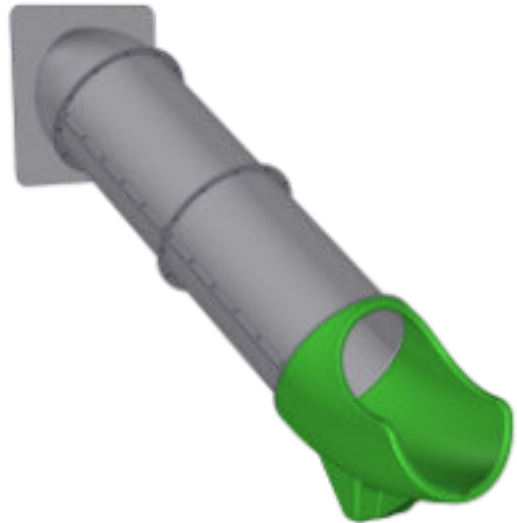
# Assembly Process



## Step 4.

Repeat the last step to install the remaining tubes. The following deck heights will determine the amount of straight tubes.

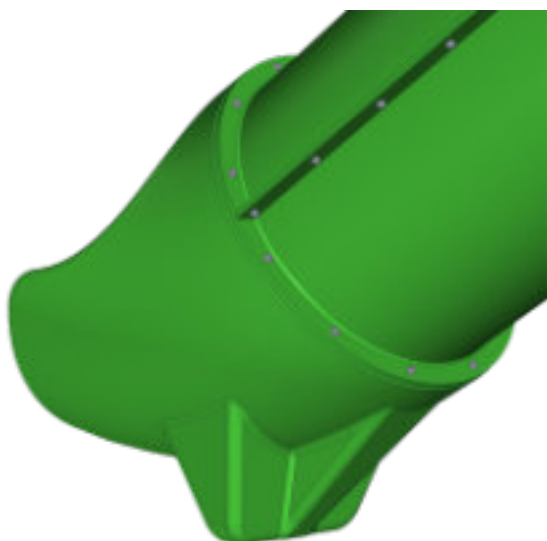
- 9ft Tunnel Express requires (4) Straight Tubes.
- 7ft Tunnel Express requires (3) Straight Tubes.
- 5ft Tunnel Express requires (2) Straight Tubes.
- 3ft Tunnel Express requires (1) Straight Tube.



## Step 5.

Install the TubeSlide Exit section against the last tube.

The last Straight Tube will have the overlap trimmed short to fit the TubeSlide Exit.



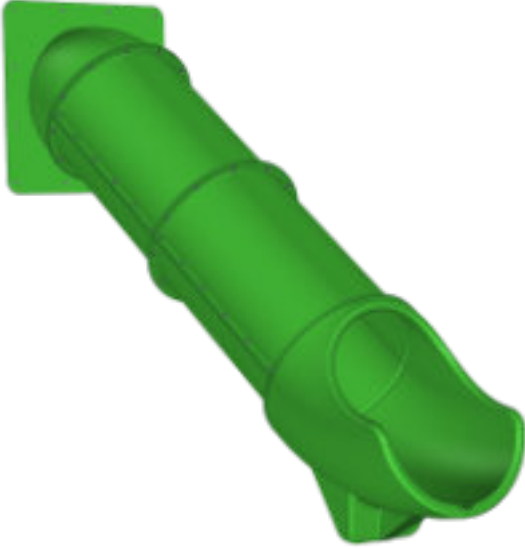
## Step 6.

Secure the overlap end of the last Straight Tube to the TubeSlide Exit with (2) 5/16" bolts with washers.

Fasten two bolts into the pressed nuts near the bottom of the Exit making sure the exit is level on both sides.

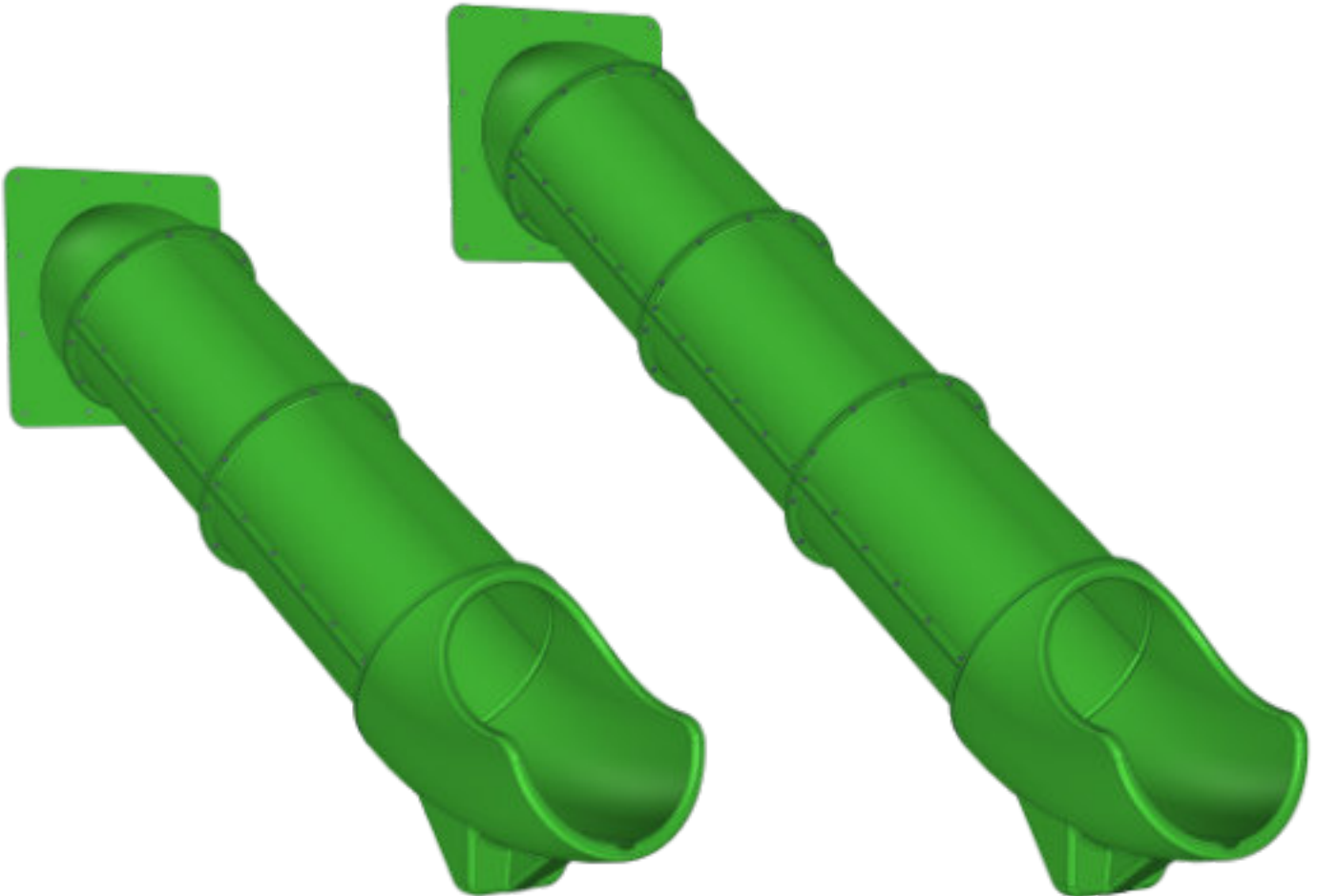
Install 5/16"x1 1/2" lags with washers through the remaining ten holes in the Tube Flange into the plastic of the Exit Section, taking care not to overtighten the lags in the plastic.

# Assembly Process



## Step 7.

Check to make sure all bolts and lags are secured tightly on the tube slide. Do not overtighten locknuts and lags.



# Safety Information

## Safety Precautions



- Make sure to properly follow instruction manual for your specific slide.
- Make sure the play structure that you are attaching the slide to is sturdy and able to support this type of equipment.
- Check and make sure all hardware is secured properly. This will need to be done as routine maintenance program on all playground equipment.
- This product is made to be used as a playground slide exclusively.
- If for any reason installation can not be completed thoroughly; do not leave slide or opening on play equipment in a unsafe manner to which injuries may occur.
- Please check with CPSC's recommendation for safety on their web site and follow their most recent handbook.

[www.cpsc.gov/s3fs-public/324.pdf](http://www.cpsc.gov/s3fs-public/324.pdf)

**Proper installation and safety is the responsibility of the installer.**